

## QUARTERLY ACTIVITIES REPORT

for the quarter ended 30 September 2015

### BARKLY COPPER-GOLD PROJECT

Blaze International Limited (BLZ) is in a Farm-In Joint Venture Agreement with Meteoric Resources NL (Barkly JV) over the highly prospective **Barkly Copper-Gold project**. The project is located around 30 km east of the town of Tennant Creek in the Northern Territory (Figure 1).

The Bluebird copper-gold prospect at the Barkly Project is emerging as a significant new discovery for BLZ. Drilling has identified a Tennant Creek-style copper-gold-bismuth mineralised occurrence at Bluebird. Mineralisation is open to the east, west, and at depth.

Nine “Bluebird Lookalike” magnetic/gravity exploration targets have been identified within the Barkly JV exploration licence. The Company believes these targets have the potential to produce further new discoveries in the area.



Figure 1 - Location of the Barkly Cu-Au-Bi project

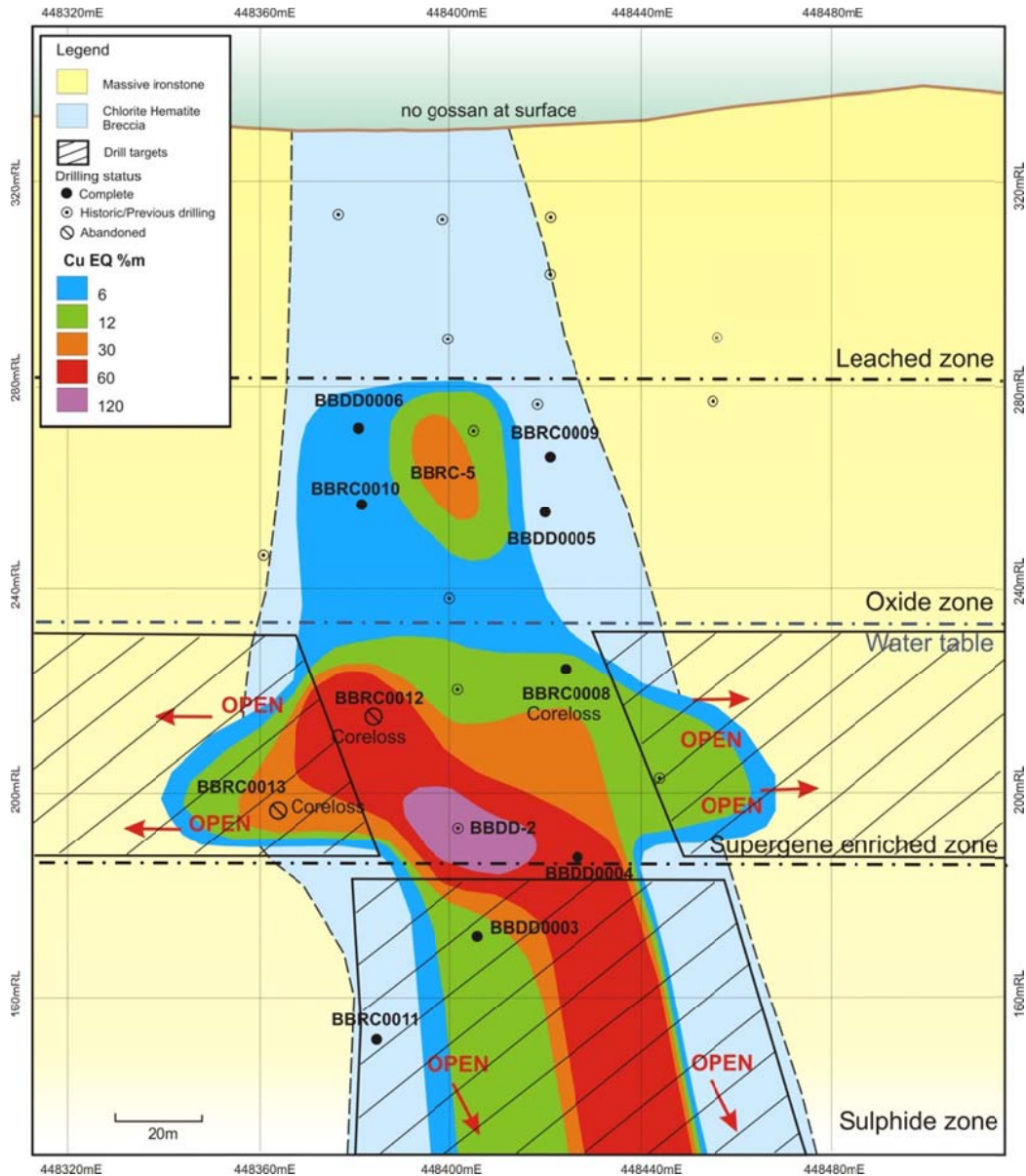
### WORK COMPLETED

A high power DHEM survey of BBDD0004 was completed during the quarter. The data generated by the survey are currently being processed and interpreted. Several subtle electromagnetic responses were detected by the survey. These will be 3D modelled and targeted for future drilling programs. The copper sulphides at Bluebird are likely to be moderately conductive and relatively discontinuous, so even subtle responses could be quite significant.

A drillhole rehabilitation program was also completed during the quarter. All of the holes drilled by Blaze International at Bluebird have now been fully rehabilitated as per industry standard practice.

Detailed petrology work on the high grade mineralisation intersected by BBDD0002 was also completed. This work provided some clarity on the alteration assemblage and mineral associations at Bluebird, which will help prioritise future exploration programs and economic evaluations.

Field mapping and ground checking of exploration targets were also undertaken. This is described in detail on page 5.

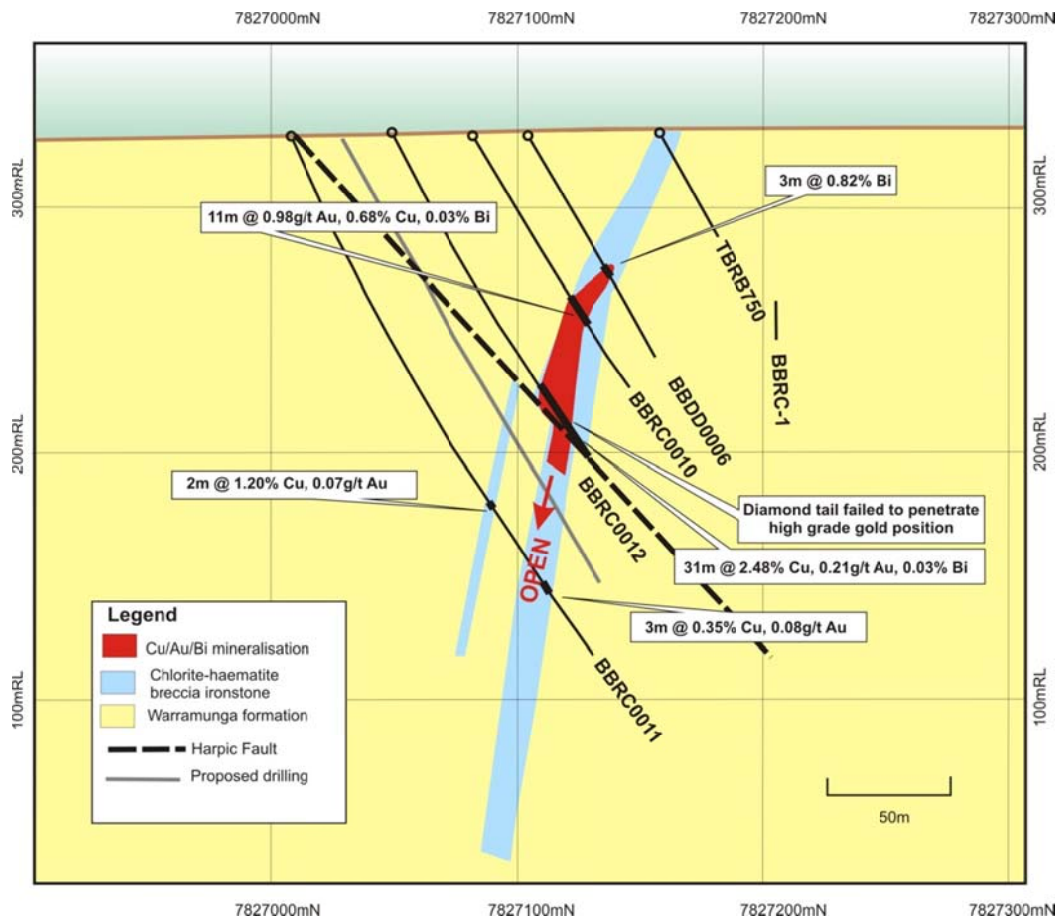


**Figure 2** - Long section of Bluebird, looking north showing copper equivalent (CuEQ%) x m\*\* contours. Note the priority drill targets marked by dark grey hatching, and the two abandoned holes BBRC0012 and BBRC0013.

\*\*CuEQ grade is calculated by combining the metals of interest based on their prices. In this case  $Cu\% + (Au\text{ ppm} \times 0.66) + (Bi\% \times 3.84) = CuEQ\%$ . It is used as a visualisation tool only and is required at Bluebird due to the poly metallic and strongly zoned nature of the mineralisation. In this situation a CuEQ% provides a better picture of the overall geometry of the mineralisation than by using copper or gold grade alone. Metallurgical recoveries were not taken into account when calculating CuEQ%. CuEQ% x m is used for the contouring to give a spatial representation of total metal accumulation.

Phase III drilling is now scheduled for 2016, after the finish of the wet season and will aim to test the following:

1. The interpreted high grade gold position on the lower ironstone contact (see Figures 3, 4 and 5)
2. The extension of the primary copper-gold-bismuth mineralisation at depth (see hatched lower target area in Figure 2)
3. Test the lateral extents of the supergene enrichment zone (see the east and west hatched target areas in Figure 2)
4. Test the magnetic anomaly generated by the 3D magnetic probe survey completed on BBDD0004
5. Test the subtle off-hole conductors generated by the DHTEM survey of BBDD0004



**Figure 3** - Cross section at 448380mE, looking west. Note that diamond drilling of BBRC0012 was abandoned without any advancement beyond the end of the RC hole

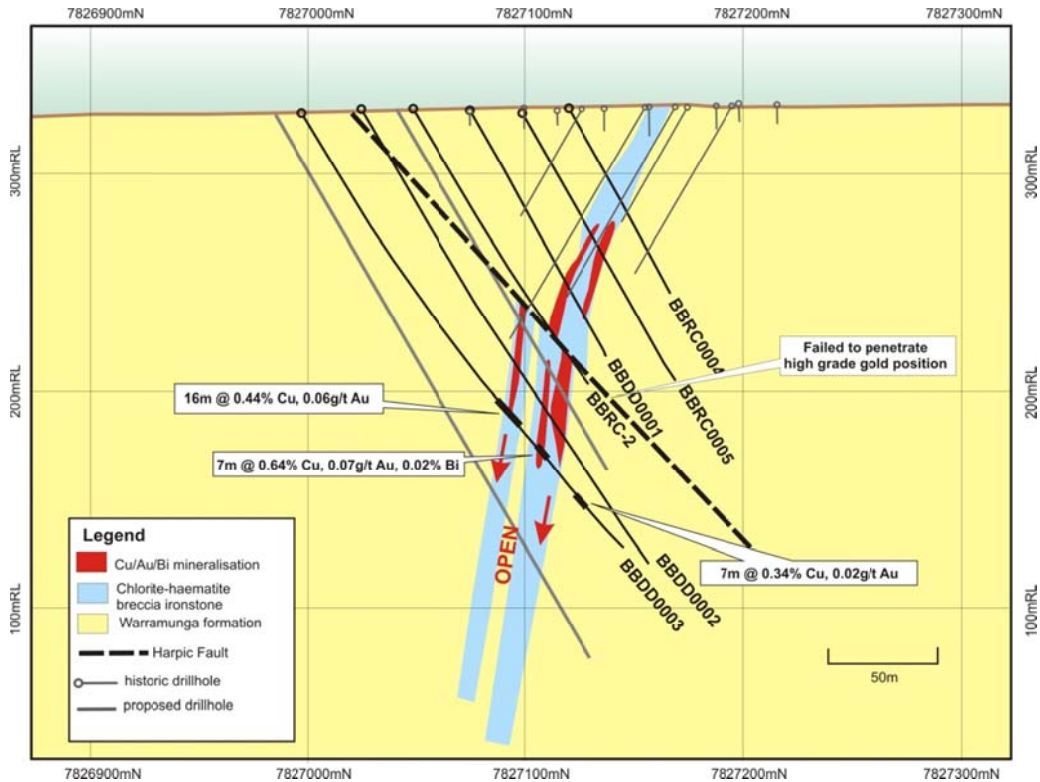


Figure 4 - Cross section at 448400mE, looking west. Note the hematite shales and chlorite hematite breccia in the footwall which are anomalous in copper

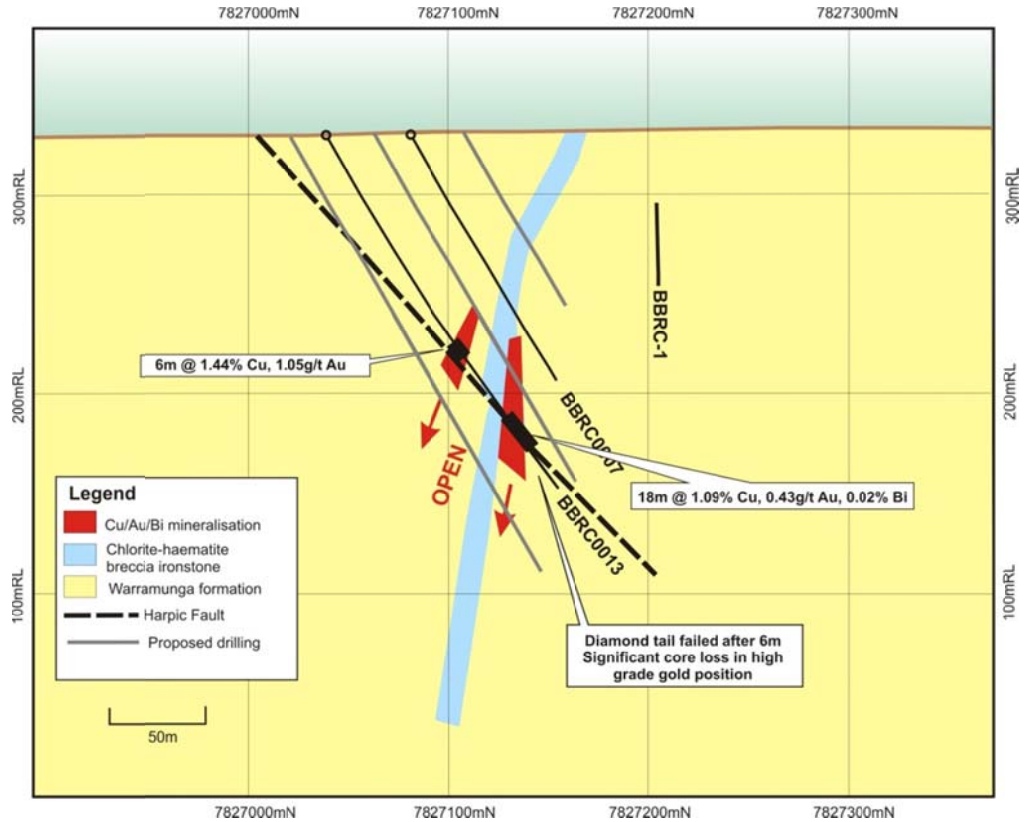
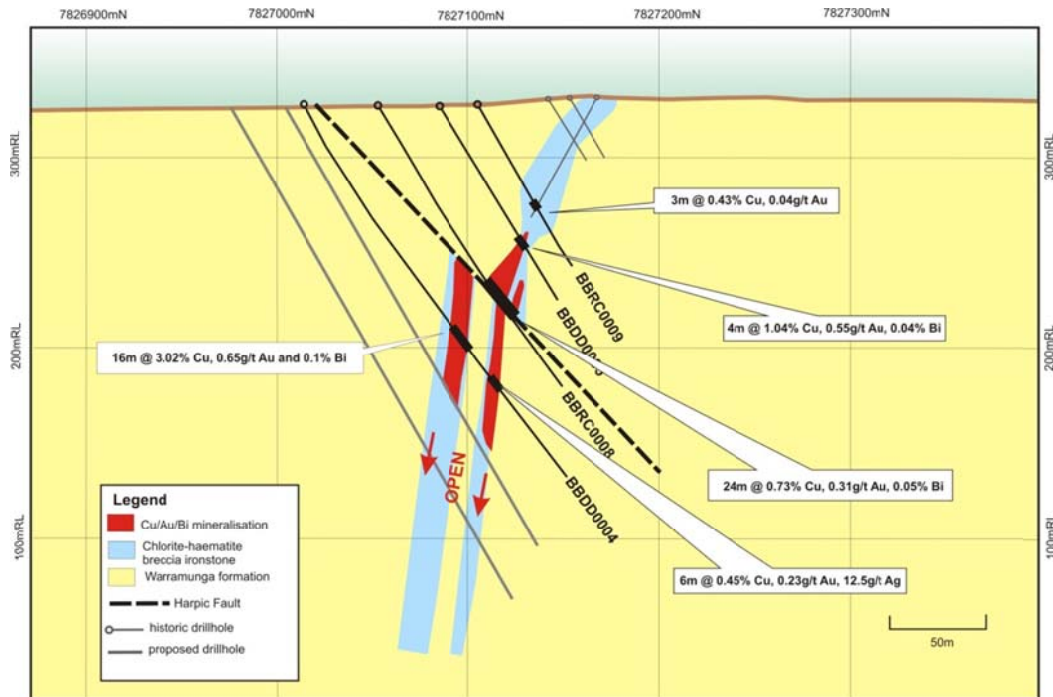


Figure 5 - Cross section at 448360mE, looking west, showing recent drilling results. Note BBRC0013 diamond drilling was abandoned at 185m, after 6m of coring



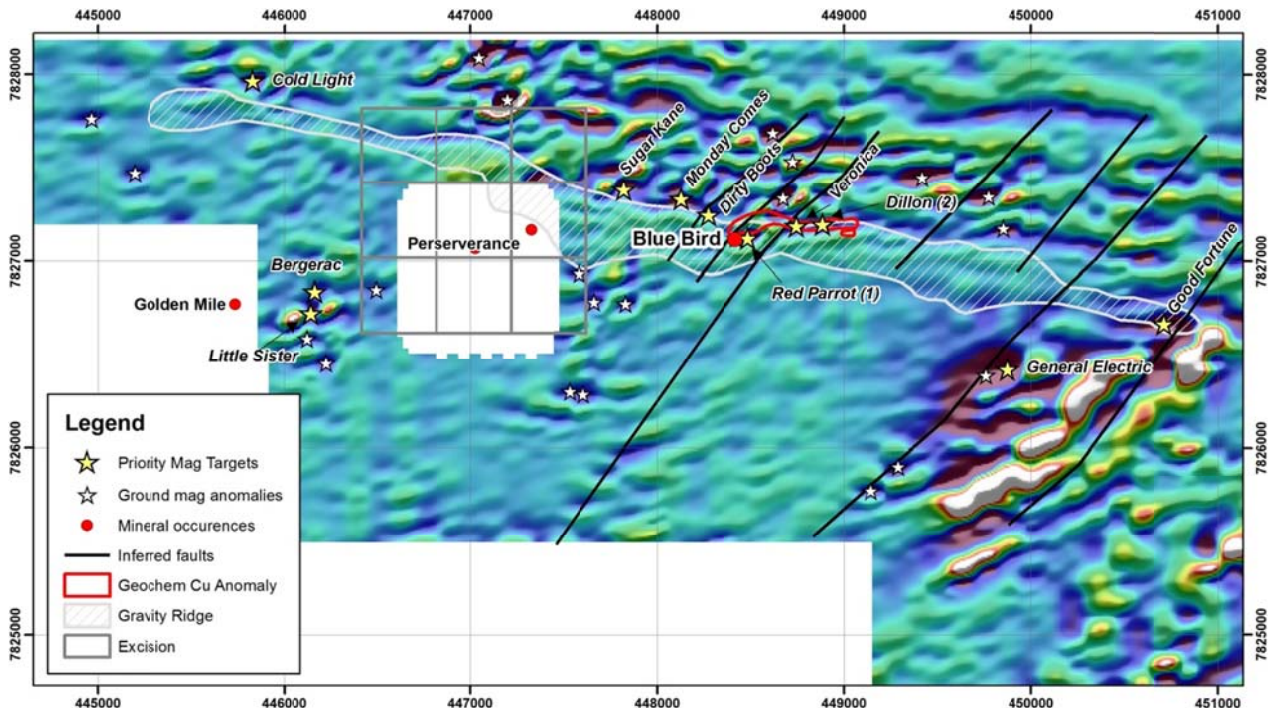
**Figure 6** - Cross section at 448420mE, looking west. Note the apparent change in dip. BBRC0008 was successfully completed by diamond drilling, but with significant core loss on the lower ironstone contact

## OTHER TARGETS WITHIN THE BARKLY PROJECT

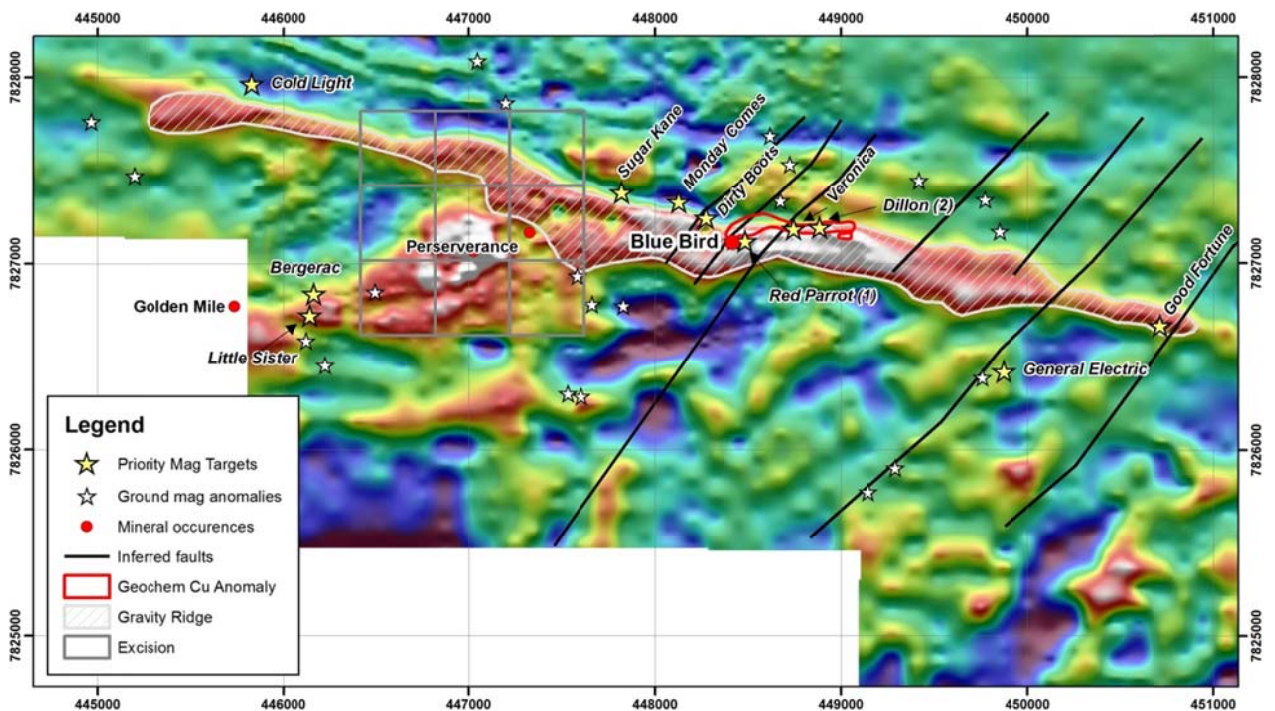
Reprocessing of magnetic and gravity geophysical datasets earlier in the year allowed the Company to fingerprint the signature of the Bluebird host ironstone and identify other similar features within the Barkly Project area. A number of targets were generated and ranked based on coincident magnetic, gravity, and/or geochemical anomalies similar to Bluebird or other deposits in the Tennant Creek Mineral Field (TCMF).

Nine of the highest ranking targets were field checked and mapped during the quarter. Field observations were positive or neutral over all of the targets visited. This means that no targets were downgraded by the field observations.

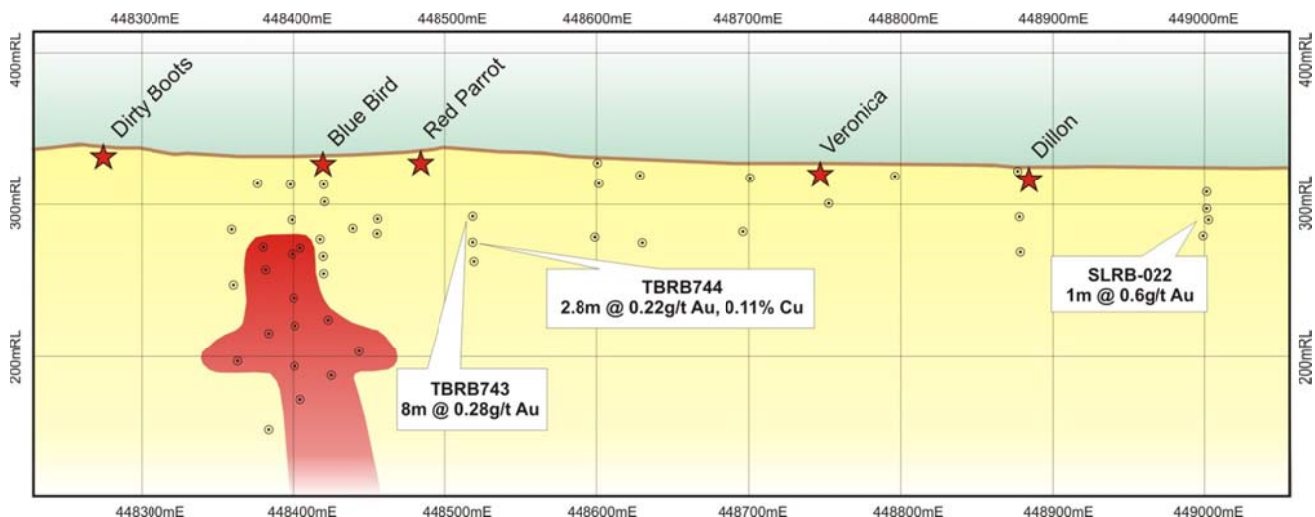
In most cases the targets are obscured by soil cover. This is interpreted as a positive, particularly in the context of Bluebird where the ironstone and the mineralisation do not develop until at least 40m below surface. There is no expression of the Bluebird mineralisation at surface as the weathering profile appears to be strongly leached in the top 40m.



**Figure 7** - First vertical derivative ground magnetic image of the Barkly project showing remnant magnetic anomalies as white stars, high priority targets as labelled yellow stars, NE trending structural interpretation as black lines and the gravity ridge in light grey hatching.



**Figure 8** - Residual gravity image of the Barkly project showing remnant magnetic anomalies with white stars, high priority targets as labelled yellow stars, NE trending structural interpretation as black lines and the gravity ridge hatched in light grey.



**Figure 9** - Longitudinal projection of the Bluebird Trend looking north, showing successful drillhole pierce points in grey circles, labelled with significant intercepts where appropriate, and high priority targets in red stars. Bluebird mineralisation is shown in red. Note the proximity of Dillon and Red Parrot to significant historic intercepts.

**For further information please contact:**

Luke Marshall, Exploration Manager

Phone (08) 9481 7833

**Or consult our website:**

<http://www.blazelimited.com.au/>

**Competent Person's Declaration**

The information in this report that relates to exploration results is based on information compiled or reviewed by Luke Marshall, who is a full time employee of Golden Deeps Limited, consulting to Blaze International Limited and a Member of the Australian Institute of Geoscientists. Mr Marshall has sufficient experience which is relevant to the style of mineralisation and type of deposit under consideration and to the activity which he is undertaking to qualify as a Competent Person as defined in the 2012 edition of the 'Australasian Code of Reporting of Exploration Results, Mineral Resources and Ore Reserves'. Mr Marshall consents to the inclusion in the report of the matters based on his information in the form and context in which it appears.

**Forward-Looking Statements**

This document may include forward-looking statements. Forward-looking statements include, but are not limited to, statements concerning Blaze International Limited's planned exploration program and other statements that are not historical facts. When used in this document, the words such as "could," "plan," "estimate," "expect," "intend," "may", "potential," "should," and similar expressions are forward-looking statements. Although Blaze International Limited believes that its expectations reflected in these forward-looking statements are reasonable, such statements involve risks and uncertainties and no assurance can be given that actual results will be consistent with these forward-looking statements.

**Appendix 1 – Schedule of Mining and Exploration Tenements**

Country	State/Region	Project	Tenement ID	Area (km <sup>2</sup> )	Grant date	Interest
Australia	NT	Barkly copper-gold	EL28620	39.16	16/12/2011	Earning 80%